

LEGACY PARTNERS FOUNDATION

“What cannot be achieved in one lifetime will happen when one lifetime is joined to another.”

—Harold Kushner

About Legacy Giving.

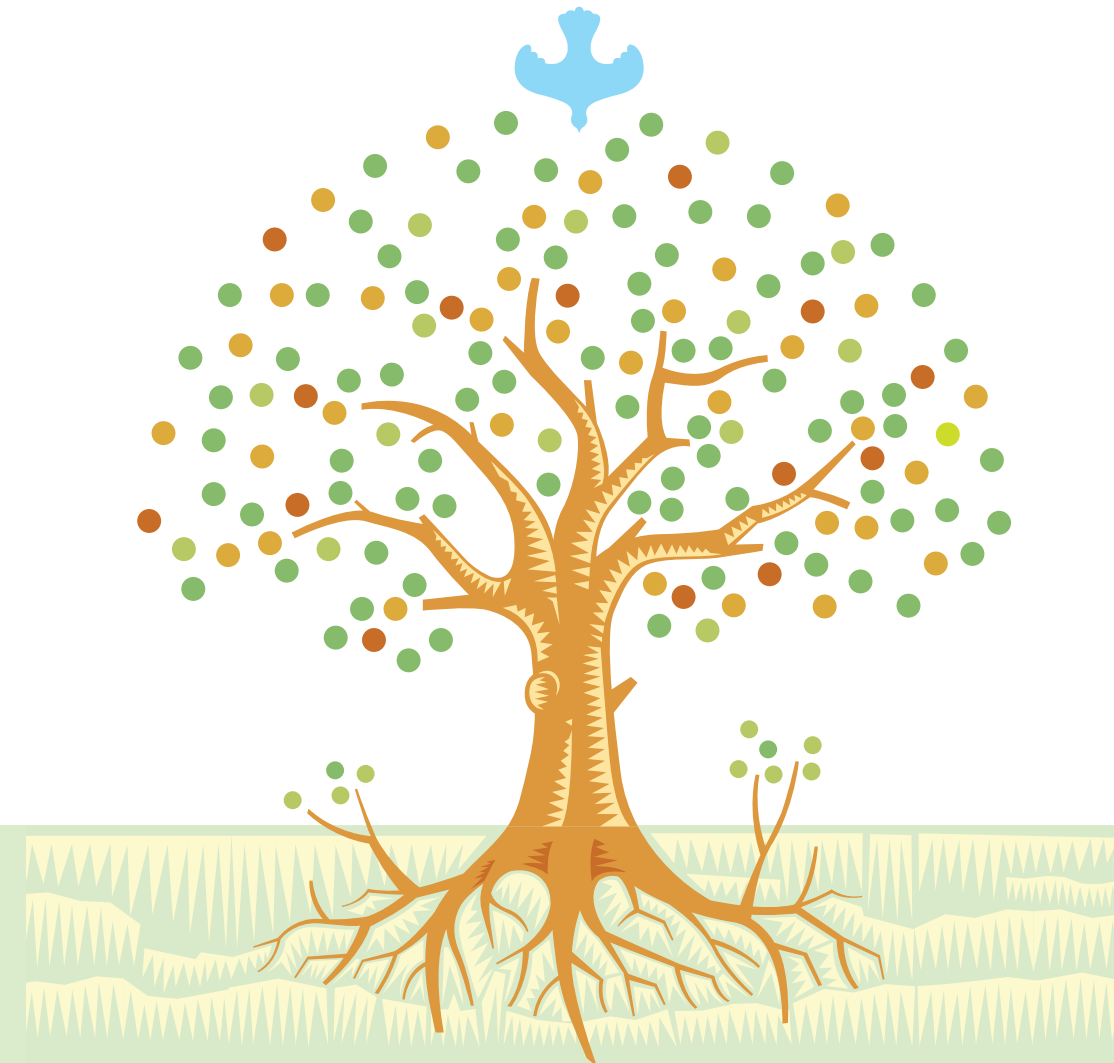
A warm and inclusive sense of family accompanied by the presence of Christ is experienced at CLCC. It is a meaningful community for so many. Legacy giving enables us to ensure the mission of the church continues beyond our lifetimes. Those who love the church have been a meaningful part of its history and they care about its future. This is the primary reason our members choose to become Legacy Partners. Legacy gifts enable each of us to continue our support of Christ’s mission in this place, beyond the limits of our earthly life.

Our Mission, Our Love, Our Giving

Examples of Our Missional Legacy, CLCC:

- Gives generously of our general offering to the Disciples Mission Fund (DMF), supporting the work of the Disciples of Christ in Georgia, the U.S., and the world.
- Participates in domestic and international mission opportunities to help improve the life of those in need due to natural disasters or poor economic opportunities.
- Provides a variety of Christian educational opportunities for continuing spiritual growth and development for all ages.
- Provides our local county food banks (Gilmer & Fannin) with thousands of pounds of fresh produce harvested from our Garden for Others.
- Provides assistance/support to various community members in need, such as through our clothes closet.
- Provides Thanksgiving and Christmas celebrations to a local special-needs apartment facility.
- Hosts Christmas celebrations and provides gifts for foster children served by DFACS.
- Supports the work of Church World Service to provide blankets for response to local and global disaster situations.

LEGACY PARTNERS FOUNDATION



We are the heart, hands and feet of Jesus on this earth.

“We would reject only those persons he rejected.”

—Rev. Dr. Fred B. Craddock

BeLove

 Cherry Log
Christian Church

Adam J. Bradley, Pastor

Street Address:
1149 Cherry Log St., Cherry Log, GA 30522

Mailing Address:
P.O. Box 289, Cherry Log, GA 30522

Phone / Fax: 706-632-1048 / 706-632-5127

Email: office@clccdoc.org

Web: clccLove.org

BeLove

 Cherry Log
Christian Church

The Impact of Legacy Partners.

Legacy Partners are those who have a deep love of our church's mission, and in response have named Cherry Log Christian Church (CLCC) as a beneficiary in their estate planning. Partners' contributions to the lasting legacy of CLCC are a testimony to their hopes for the future of this church.

Currently there are over 50 partners who have committed gifts from their estates, and we hope this growing list of names acts as an inspiration to others to consider their own end-of-life giving. While we seek to appropriately recognize our Legacy Partners periodically throughout the year, requests to remain anonymous will be honored.

The Christian Church Foundation (*a national Disciples Financial Ministry*) continues to be in partnership with us as the professional caretakers of our Legacy funds. Distribution of fund dividends, which are set by congregational policy, benefit multiple aspects of church life, including: Mission & Outreach, Education, and Property Maintenance/Debt reduction.

Planning Instruments Used for Legacy Giving.

Estate planning needs vary from person to person. There are a variety of planning instruments which can be used to best fit your situation. Some giving options can provide you with income; some will permit you to claim a tax deduction; and all will provide CLCC some kind of future contribution.

Instruments which accomplish this are:

- Charitable Remainder Unitrust
- Charitable Gift Annuity
- Pooled Income Fund

Other instruments can provide income to CLCC and have the assets revert to you or your designee after a fixed term or for the life of one or more individuals. One instrument that can accomplish this is the Charitable Remainder Unitrust.



These instruments enable you to provide gifts or bequests to CLCC in ways most suited to your family and estate planning needs.

SIMPLE WAYS TO STRUCTURE YOUR GIVING

BEQUESTS

LIFE INSURANCE

RETIREMENT ACCOUNTS

BEQUESTS

You can choose to designate in your will a portion of your assets be used to benefit CLCC. You can designate a fixed amount, a percentage of your estate, or the residual after other debts, taxes and bequests have been fulfilled.

LIFE INSURANCE

You can designate CLCC as a beneficiary of your life insurance policy. If this fits your situation, it is a simple and easy way to pass end-of-life funds to the church without having to revise your will.

RETIREMENT ACCOUNTS

As with life insurance, you can designate CLCC as a beneficiary of your IRA, 401K, SEP or similar retirement accounts. This can have tax advantages. *Unlike your second-tier heirs who will have to pay regular income tax rates when inheriting IRA-type accounts, CLCC will not have to pay taxes.*

Because there are so many options, members should consult their own tax advisors to ensure selection of the proper instruments for their situations. If you do not have a financial planner and do intend to include CLCC in your end-of-life planning, a knowledgeable representative of the Christian Church Foundation is available to assist you at 1-800-668-8016.

Retirement Planning.

In addition to helping ensure the future of CLCC, wise end-of-life planning can include the following benefits:

- Maintaining control and flexibility
- Avoiding double taxation
- Creating a permanent endowment
- Honoring someone with a memorial gift



Managing Legacy Partner Gifts.

Gifts to the Legacy Partners Fund become part of the *Cherry Log Christian Church Endowment Fund*. This is a permanent fund. Gifts given to the endowment build principal for the future. Distributions from the Endowment Fund are used for expansion of CLCC's educational and outreach ministries, for facility maintenance, and for debt reduction. The Endowment Fund policy safeguards the investment and determines the distribution of the funds for congregational use. Five Endowment Fund administrators, elected by the congregation, are responsible for ensuring adherence to the policy. A copy of the policy is available at: clccLOVE.org/legacy.

Legacy Partner gifts can also be made in a lump sum either for a designated purpose or for general fund use. These designated lump sum gifts, such as for debt reduction, contribute to the long-term viability and vitality of the church although they will not add to the value of our permanent fund.

Becoming a Legacy Partner.

We encourage you to prayerfully consider becoming a CLCC Legacy Partner. Those who wish to be a part of this growing mission to fund the future, please contact the Legacy Partner Foundation chairperson. Legacy Partner Fund information and a listing of the currently serving Chairperson and Administrators can be accessed at: clccLOVE.org/legacy.



LEGACY PARTNERS
FOUNDATION

QUESTIONS & EXPRESSIONS OF INTEREST:
Please contact the Legacy Partner Foundation
Fund Administrators at 706-632-1048.